



# Size Chart

Styles	Area	4 XS	6 S	8 S	10 M	12 M	14 L	16 L	18 L	20 XL	22 XL	24 XL
424	Chest	32-33	34-35	37-38	40-42	44-46	48					
	Hip	36-37	38-40	42-44	46-48	50-52	55					

Styles	Area	32-34 XS	36-38 S	40-42 M	44-46 L	48-50 XL	52-54 2X	56-58 3X	60-62 4X	64-66 5X	68-70 6X
400	Back Length	38.5	39.5	40.5	41	42	43	44	45	46	47
421	Sleeve Length	24	24.5	25.5	26.5	27	28	29	30	31	32

401	Back Length	32	32.5	33	33.5	34	34.5	35	36	37	38
	Sleeve Length	24	24.5	25.5	26.5	27	28	29	30	31	32

405	Back Length	42	42.5	43	43.5	44	44.5	45	45.5	46	46.5
	Sleeve Length	24	24.5	25	25.5	26	26.5	27	27.5	28	29

406	Back Length	28.5	29	29.5	30	30.5	31	31.5	32	33	34
	Sleeve Length	24	24.5	25.5	26.5	27	28	29	30	31	32

411	Back Length		37	39	41	43	45				
	Sleeve Length		25	25.5	26.5	26.5	27.5				

416	Back Length	28	28.5	29	30	31	32	33	34	35	36
414	Sleeve Length	25	25.5	26	26.5	27	27.5	27.5	28	29	29

\*Note: Sleeve Length on 416 includes the 3" Knit Cuffs on measurement above.

**NOTE:** SIZES MAY VARY BY COLOR/ITEM. Sizes are based on actual body measurements in inches. Styles and sizes are subject to change or withdrawal without notice.

**1 NECK:** Measure around the base of the neck where a collared shirt would fit, or measure a collarband on a shirt that fits you well. Lay the collarband flat. Measure from the beginning of the bottom hole to the center of the bottom.

**2. Chest:** Measure well up under the arms, across the shoulder blades and over the fullest part of the chest. Hold the tape firmly not too tightly. Be sure the tape is level and straight across the back while in a natural stance.

**SPECIAL/CUSTOM ORDERS:** Not all SIZES are available for regular orders. Any sizes that are not listed in the item description, but are listed in the sizing chart are going to be Special/Custom orders based of 12 or more.

**3. Sleeve:** Bend the elbow slightly. Start at the center of the back of the neck and measure across the shoulder to the elbow and down to the wrist bone.

**4. Waist:** Remove the belt. Measure over the shirt (not over the pants) at the position pants are normally worn. Hold the tape firmly, but not tightly.

**5.Hips:** Stand with heels together. Measure around the fullest part of the hips, holding tape measure level.

**6. Inseam:** Use similar style pants that fit well. Lay them flat, with the front and back creases smooth. Measure along the inside seam of one leg from the bottom of hem to the crotch.

**7. Sleeve Opening:**  
**8. Sleeve Inseam:**  
**9. Outseam:**  
**10. Leg Opening:**

**11. Shoulders:**  
**12. Back Length:**  
**13. Sweep:**

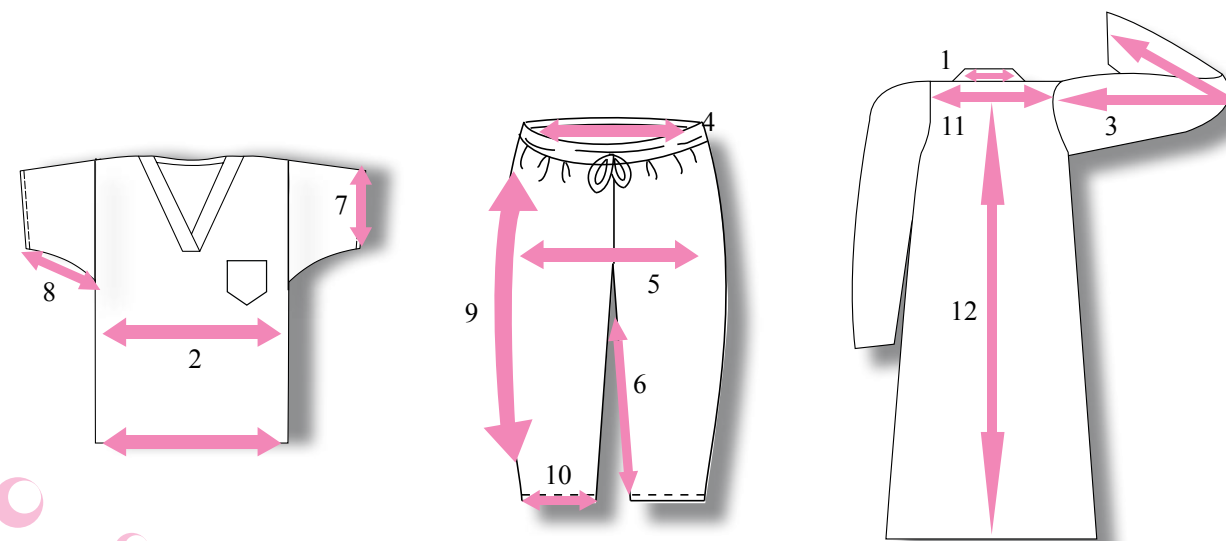
Styles	Area	XS	S	M	L	XL	2X	3X	4X	5X	6X
220c											
221c											
218	Chest	30-32	34-36	38-40	42-44	46-48	50-52	54-56	58-60	66-68	70-72
220	Back Length	26.5	27	27.5	28	28.5	29	29.5	30	30.5	31
221											
1227P											

300	Waist	26-28	29-31	32-34	35-38	39-42	43-46	47-50	51-54	54-56	58-60
304	Hips	32-34	34-36	38-40	42-44	48-50	50-52	54-56	58-60	62-64	66-68
311	Inseam	30	30.5	31	32	32.5	33	33	33	34	34

Added length to standard sizing above: Tall = +2 or Extra Tall = +4"

300c	Waist	26-28	29-31	32-34	35-38	39-42	43-46	47-50	51-54	60-62	64-66
306c	Hips	32-34	34-36	38-40	42-44	48-50	50-52	54-56	58-60	62-64	66-68
306	Inseam	30	30.5	31	32	32.5	33	33	33	34	34
307											
312											

Added length to standard sizing above: Tall = +2 or Extra Tall = +4"



**NOTE: SIZE MAY VARY BE COLOR/ITEM.**

Sizes are based on actual body measurements in inches. Style and sizes are subject to change or withdrawal without notice

**SPECIAL/CUSTOM ORDERS:**

Not all SIZES are available for regular orders. Any sizes that are not listed in the item description, but are listed in the sizing chart are going to be Special/Custom orders based of 12 or more.